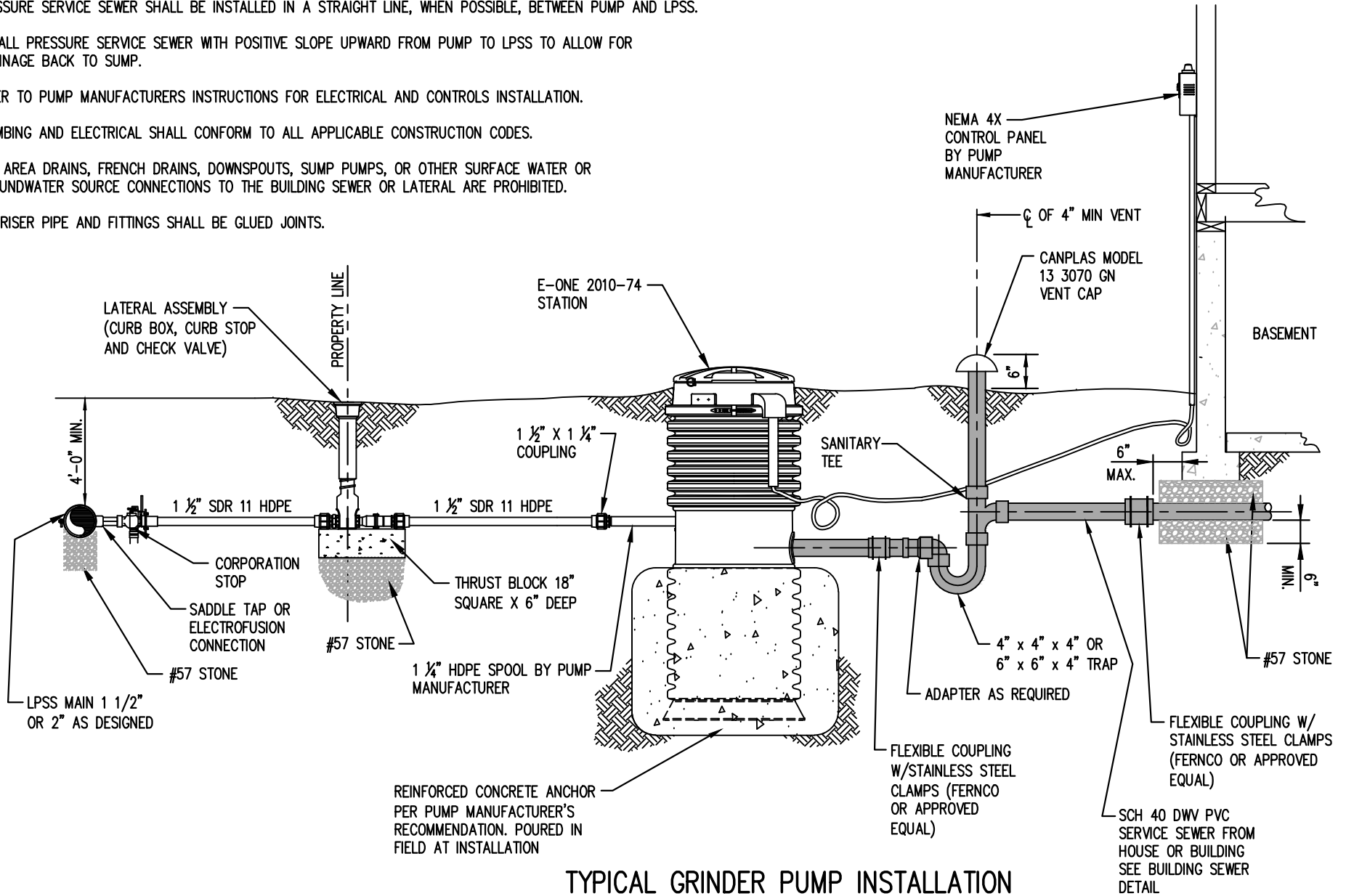


NOTES:

1. ALL PVC PIPING SHALL BE BEDDED WITH #57 STONE 6" MIN. THICKNESS ALL AROUND PIPE.
2. ALL HDPE PIPE SHALL BE BEDDED WITH #57 STONE 6" MIN. THICKNESS ALL AROUND PIPE.
3. PRESSURE SERVICE SEWER SHALL BE INSTALLED IN A STRAIGHT LINE, WHEN POSSIBLE, BETWEEN PUMP AND LPSS.
4. INSTALL PRESSURE SERVICE SEWER WITH POSITIVE SLOPE UPWARD FROM PUMP TO LPSS TO ALLOW FOR DRAINAGE BACK TO PUMP.
5. REFER TO PUMP MANUFACTURERS INSTRUCTIONS FOR ELECTRICAL AND CONTROLS INSTALLATION.
6. PLUMBING AND ELECTRICAL SHALL CONFORM TO ALL APPLICABLE CONSTRUCTION CODES.
7. ANY AREA DRAINS, FRENCH DRAINS, DOWNSPOUTS, SUMP PUMPS, OR OTHER SURFACE WATER OR GROUNDWATER SOURCE CONNECTIONS TO THE BUILDING SEWER OR LATERAL ARE PROHIBITED.
8. ALL RISER PIPE AND FITTINGS SHALL BE GLUED JOINTS.



TYPICAL GRINDER PUMP INSTALLATION